

Look, Listen, Live

Safety around Grand River Transit vehicles is a shared responsibility. Waterloo Region residents of all ages should be aware of the dangers surrounding ION trains, crossings, tracks and the risks associated with overhead lines.

Learn more about:

- Travelling safely
- Walking, cycling and driving near ION
- ION overhead lines



GRAND RIVER TRANSIT

Travelling safely



ION trains are quiet. Remove headphones, don't text and turn down devices when approaching stations, tracks and crossings.



Stay behind the yellow platform edge while waiting for your train.



Remove your backpack and hold in your hands when entering or exiting the train.

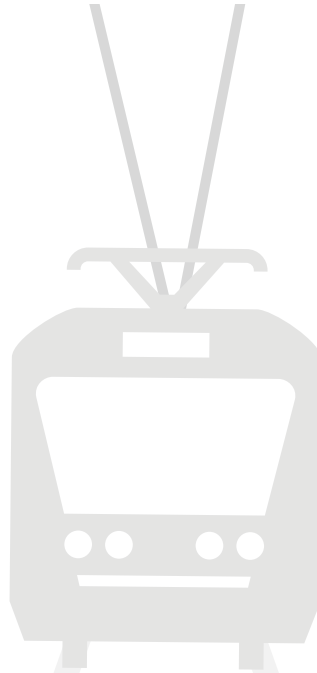
Keep your belongings secure and close when entering, exiting and travelling.



Mind the doors. Listen for the signal and be ready to exit or enter the train.



Wear light-coloured clothing, reflectors or lights if you're travelling when it's dark out.



The yellow strips located inside the train are for emergencies. Pressing them will sound an alarm and alert the operator.

In winter months



Take care when walking on slippery, wet platforms. Keep your head up, stay alert and look and listen for approaching trains. The same clothing that keeps you toasty in winter months can muffle sounds (e.g. hats, earmuffs, oversized scarves).



Mobility Devices

If you use a mobility device, such as a wheelchair:

- Only cross the tracks at designated crossings.
- Cross the tracks at a right angle.
- If your mobility device breaks down or gets stuck on or near the tracks ask someone nearby for help getting out of your device and moving to a safe area.

Walking, cycling, and driving near ION



When walking – cross tracks at designated crossings, remove headphones, listen for signals, look up from devices and check for oncoming trains. Never run across traffic to catch the train or cross the tracks when lights are flashing or crossing arms are down.

When cycling – never ride on the tracks (it's never a good idea to use them as a shortcut), cross the tracks at a right angle and walk your bike on station platforms.

When driving – follow the rules of the road, obey traffic signals, stay in your own lane and never try to beat the train.

Signs and Signals



Reserved lane sign

This sign shows that the tracks are reserved for trains at all times



Do not stop or park on tracks



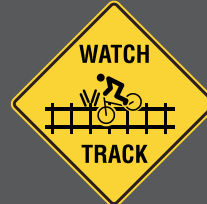
No stopping



Track beside roadway



Look both ways for train

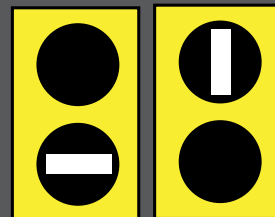


Cyclists, watch for tracks ahead



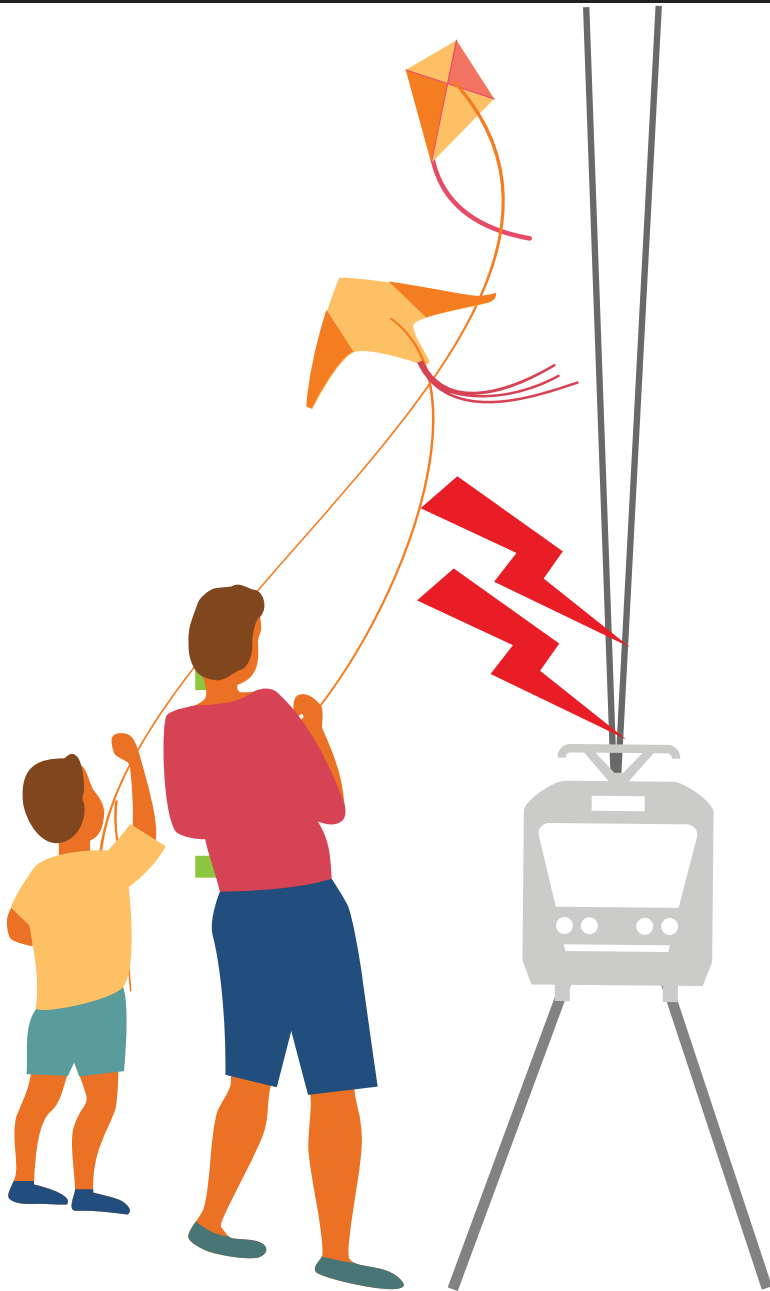
No right turn or left turn signals

These signals light up temporarily when a train is approaching an intersection. Drivers cannot turn right or left when either signal is lit



ION light rail vehicle signals
These signals are only for ION train and bus operators

ION overhead lines



The overhead catenary system (OCS) is suspended over the track to supply power to ION vehicles.

These lines carry high voltage electricity and are live at all times.

Look up and stay clear, especially when doing any of the following:

- ▶ Playing (e.g. flying a kite, playing sports or carrying a fishing rod or helium balloon near the lines).
- ▶ Driving (e.g. carrying a tall or oversized load).
- ▶ Working outdoors (e.g. trimming trees or using a ladder). Anyone working near ION lines need a permit from the Region.

Treat the overhead lines with the same caution you would any other live wire. If you see any fallen lines, damaged poles or any object along the lines, stay away and call 9-1-1.

Have questions?

visit: grt.ca

Call: **519-585-7555**

Deaf and Hard of Hearing (TTY): **519-575-4608**

